

THROUGH THE BIBLE

IN 12-WEEKS

OT

9/4 LAW (GEN-DEUT)

9/11 HISTORY (JOSH-EST)

9/18 POETRY (JOB-SONG)

9/25 PROPHECY (ISA-MAL)

10/2 OT NARRATIVE

10/9 OT RECAP

NT

10/16 GOSPELS (MATT-ACTS)

10/23 PAULINE (ROM-PHM)

10/30 CATHOLIC (HEB-JUDE)

11/6 APOCALYPTIC (DAN, REV)

11/13 NT NARRATIVE

11/20 NT RECAP

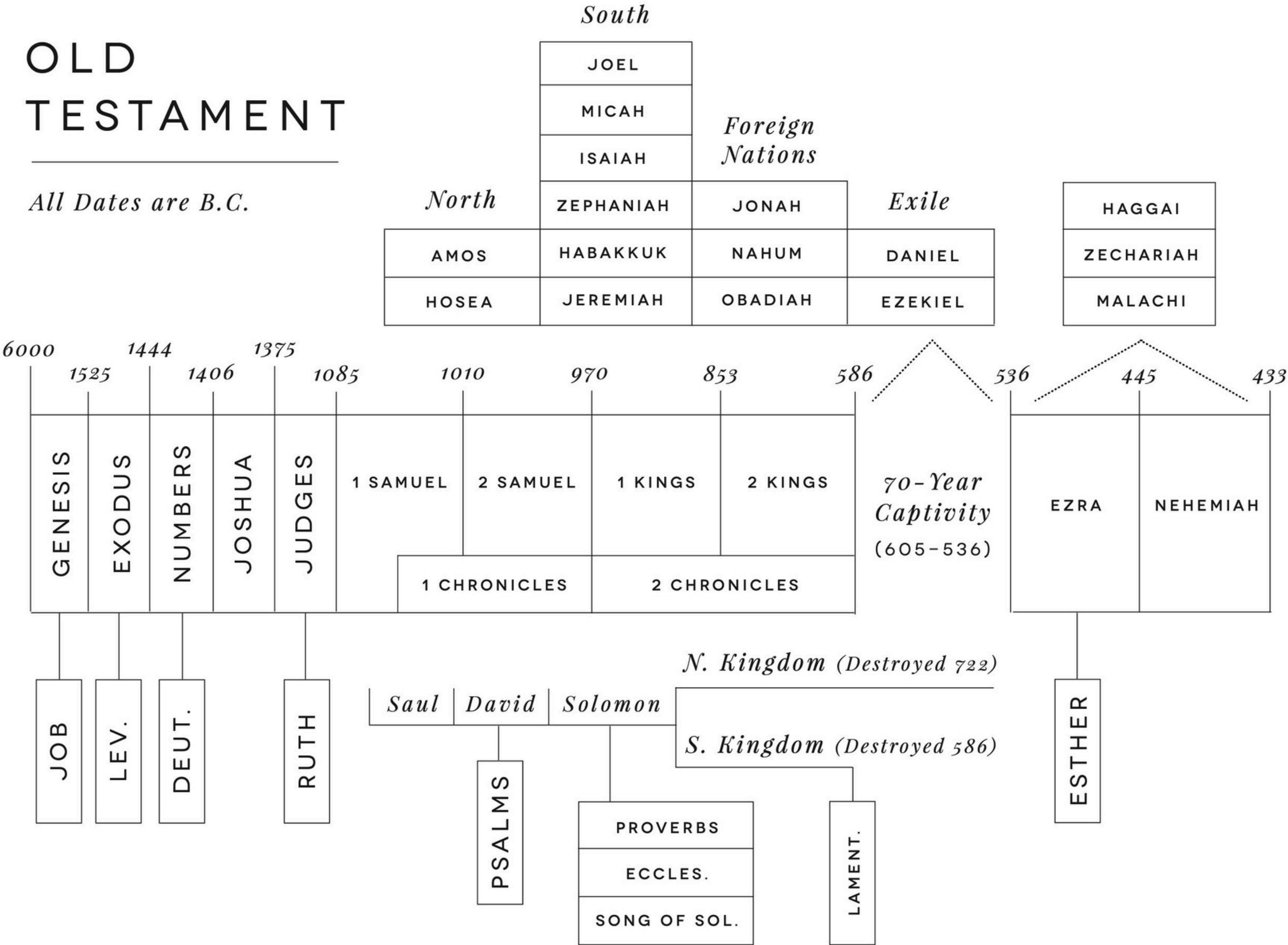
OT

HISTORY

JOSH-EST

OLD TESTAMENT

All Dates are B.C.



United Kingdom

Years (BC)	King	Start / End	Prophet	Scripture
1050 - 1010	Saul	Good / Evil	Samuel	1 Sa 8-31 1 Ch 9-10
1010 - 970	David (Captain)	Good / Good	Samuel	1 Sa 16-31 2 Sa 1-24 1 Ki 1-2 1 Ch 11-29
			Nathan	
970 - 930	Solomon (Son)	Good / Evil	Nathan	1 Ki 1-11 2 Ch 1-9

Divided Kingdom

Judah					Israel				
Years	King	Start / End	Prophet	Scripture	Years	King	Start / End	Prophet	Scripture
931 - 913	Rehoboam (Son)	Evil / Evil	Shemaiah	1 Ki 12, 14 2 Ch 10-12	931 - 910	Jeroboam I (servant)	Evil / Evil	Ahijah	1 Ki 12-14 2 Ch 10
913 - 911	Abijah (Son)	Evil / Evil		1 Ki 15 2 Ch 13					
911 - 870	Asa (Son)	Good/Good		Hanani	1 Ki 15 2 Ch 14-16	910 - 909	Nadab (son)	Evil / Evil	
			909 - 886			Baasha	Evil / Evil	Jehu	1 Ki 16
			886 - 885			Elah (Son)	Evil / Evil		1 Ki 16
			885			Zimri (Captain)	Evil / Evil	Micaiah	1 Ki 16
			885 - 874			Omri (Captain)	Evil / Evil	Elijah 1 Ki 17-19 1 Ki 21 2 Ki 1-2	1 Ki 16
			874 - 853			Ahab (Son)	Evil / Evil		1 Ki 17 2 Ch 18
			853 - 852			Ahaziah (Son)	Evil / Evil		1 Ki 22 2 Ki 1
870 - 848	Jehoshaphat (Son)	Good/Good		1 Ki 22 2 Ch 17-20	852 - 841	Joram (Son of Ahab)	Evil / Evil	Elisha 1 Ki 19 2 Ki 2-9 2 Ki 13	2 Ki 3
848 - 841	Jehoram (Son)	Evil / Evil	Obadiah(?)	2 Ki 8 2 Ch 21	841 - 814	Jehu (Captain)	Good / Evil		2 Ki 9-10
841	Ahaziah (Son)	Evil / Evil		2 Ki 8-9 2 Ch 22					
841 - 835	Athaliah (mother)	Evil / Evil		2 Ki 11 2 Ch 22-23					

841	Ahaziah (Son)	Evil / Evil		2 Ki 8-9 2 Ch 22	841 - 814	Jehu (Captain)	Good / Evil	1 Ki 19 2 Ki 2-9 2 Ki 13	2 Ki 9-10	
841 - 835	Athaliah (mother)	Evil / Evil		2 Ki 11 2 Ch 22-23						
835 - 796	Joash (son of Ahaziah)	Good / Evil	<i>Joel</i>	2 Ki 11-12 2 Ch 23-24						814 - 798
796 - 767	Amaziah (son)	Good / Evil		2 Ki 14 2 Ch 25	798 - 782	Jehoash (Son)	Evil / Evil		2 Ki 13-14	
					782 - 753	Jeroboam II (Son)	Evil / Evil		2 Ki 14	
767 - 740	Uzziah aka Azariah (Son)	Good/Evil		2 Ki 15 2 Ch 26	753 - 752	Zechariah (Son)	Evil / Evil	<i>Amos</i> <i>Hosea</i>	2 Ki 15	
					752	Shallum	Evil / Evil		2 Ki 15	
					752 - 742	Menahem	Evil / Evil		2 Ki 15	
					742 - 740	Pekahiah (Son)	Evil / Evil	(2 Kings 14:25; Jonah 1:1)	2 Ki 15	
748 - 732	Jotham (Son)	Good/Good	<i>Isaiah</i> <i>Micah</i>	2 Ki 15 2 Ch 27	752 - 740 (rival) 733 - 722 (sole)	Pekah (Captain)	Evil / Evil	<i>Micah</i>	2 Ki 15	
732 - 716	Ahaz (Son)	Evil / Evil		2 Ki 16 2 Ch 28 Is 7						
716 - 687	Hezekiah (Son)	Good/Good			2 Ki 18-20 2 Ch 29-32 Is 36-39	732 - 722	Hoshea	Evil / Evil		2 Ki 17
						Israel into Assyrian captivity - 722 BC				

				Is 7	732 - 722	Hoshea	Evil / Evil		2 Ki 17
716 - 687	Hezekiah (Son)	Good/Good		2 Ki 18-20 2 Ch 29-32 Is 36-39	Israel into Assyrian captivity - 722 BC				
687 - 642	Manasseh (Son)	Evil / Good		2 Ki 21 2 Ch 33					
642 - 640	Amon (Son)	Evil / Evil		2 Ki 21 2 Ch 33					
640 - 608	Josiah (Son)	Good/Good	Habakkuk Zephaniah Jeremiah Ezekiel (Lamentations)	2 Ki 22-23 2 Ch 34-35					
608	Jehoahaz (Son)	Evil / Evil		2 Ki 23 2 Ch 36					
608 - 597	Jehoiakim (Son of Josiah)	Evil / Evil		2 Ki 23-24 2 Ch 36					
597	Jehoiachin (Son)	Evil / Evil		2 Ki 24-25 2 Ch 36					
597 - 586	Zedekiah (Son of Josiah)	Evil / Evil		2 Ki 24-25 2 Ch 36					
Judah into Babylonian captivity - 586 BC									
586-450			Jeremiah Haggai Zechariah Malachi						

JOSHUA (1406—1375 BC)



- 1–5 Israel enters the promise land
- 6–12 Israel conquers the promise land
- 13–24 Israel allocates the promise land

Lesson: There's victory in trusting and obeying the Lord.

JUDGES (1375—1050 BC)



- 1–2 The failure of Israel to drive out sin
- 3–16 The corruption of Israel's leaders
- 17–21 The corruption of Israel's society

Lesson: Disobedience and sin leads to death and suffering.

RUTH (1150—1100 BC)



- 1 Ruth's loyalty in the midst of tragedy
 - 2 Ruth and Boaz meet
 - 3 Ruth proposes to Boaz
- 4 Boaz's loyalty leading to blessing

Lesson: Stay faithful, because God is working behind the scenes.

1 SAMUEL (1100—1010 BC)



- 1–7 Samuel leading people to repentance
- 8–15 Saul leading people to disobedience
- 16–31 David waiting on God's plan for Saul

Lesson: God opposes the proud, but gives grace to the humble.

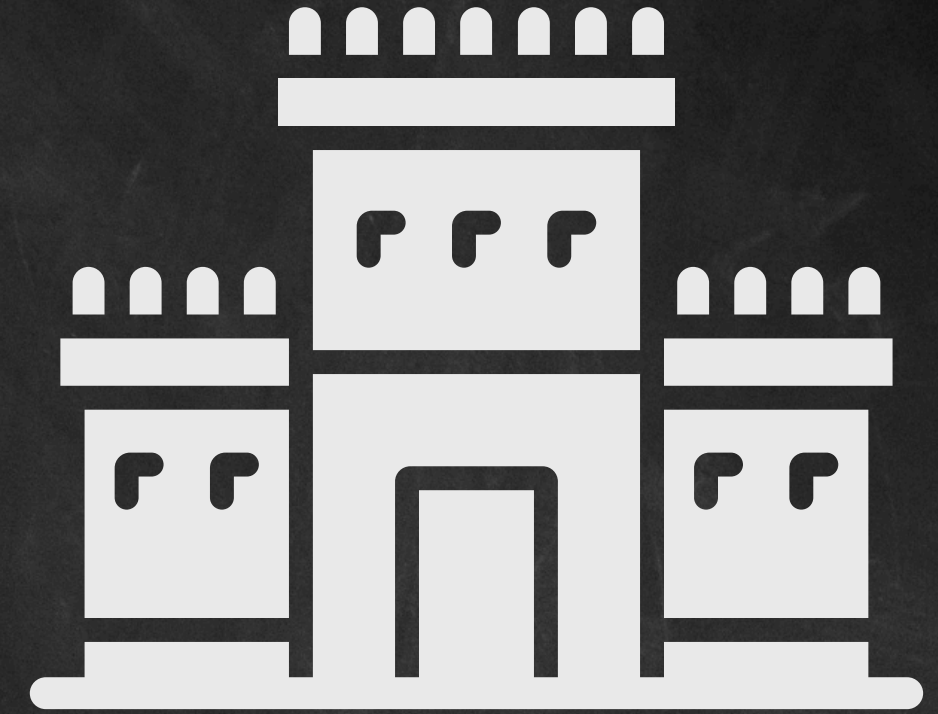
2 SAMUEL (1010—970 BC)



- 1–10 David is blessed for his faithfulness
- 11–20 David suffers loss for his unfaithfulness
- 21–24 David praises the Lord despite his sin

Lesson: God works out grace and justice for imperfect people.

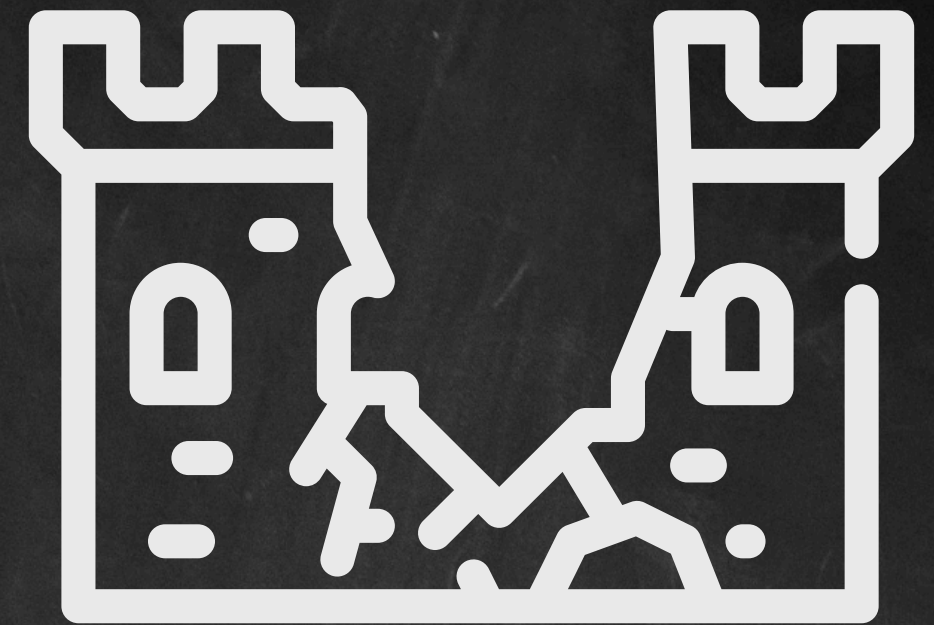
1 KINGS (970—853 BC)



- 1–9 Solomon reigns and builds the temple
- 10–16 Israel is split into two kingdoms
- 17–22 God speaks through Elijah

Lesson: Learn from past sins, don't repeat them.

2 KINGS (853—586 BC)

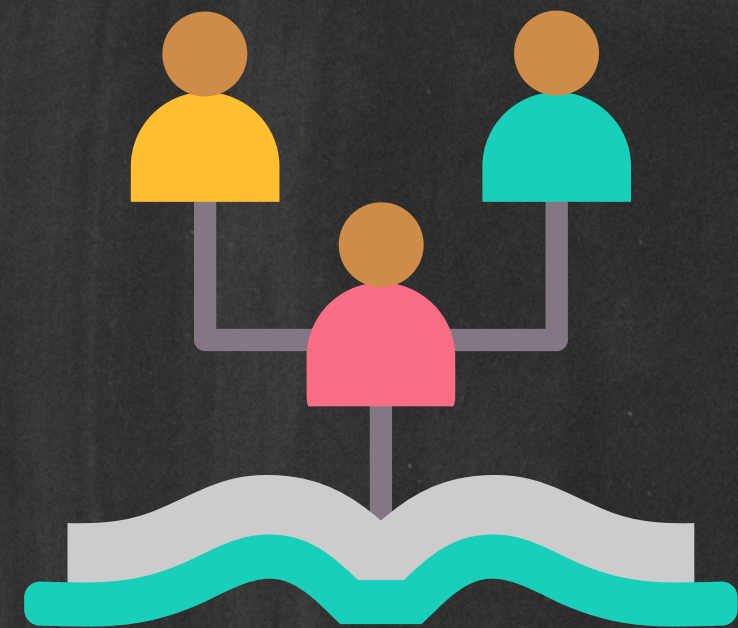


- 1–8 God speaks through Elisha
- 9–17 Israel is conquered by Assyria
- 18–25 Judah is conquered by Babylon

Lesson: Rejecting God leads to destruction.

1 CHRONICLES (1010—970 BC)

- 1–9 The genealogy of King David
- 10–29 The life of King David



Lesson: God redeems humanity through the line of David.

2 CHRONICLES (970—539 BC)

- 1–16 The rise and fall of Israel
- 17–28 Prosper when faithful, die when unfaithful
- 30–36 Too little righteousness too late

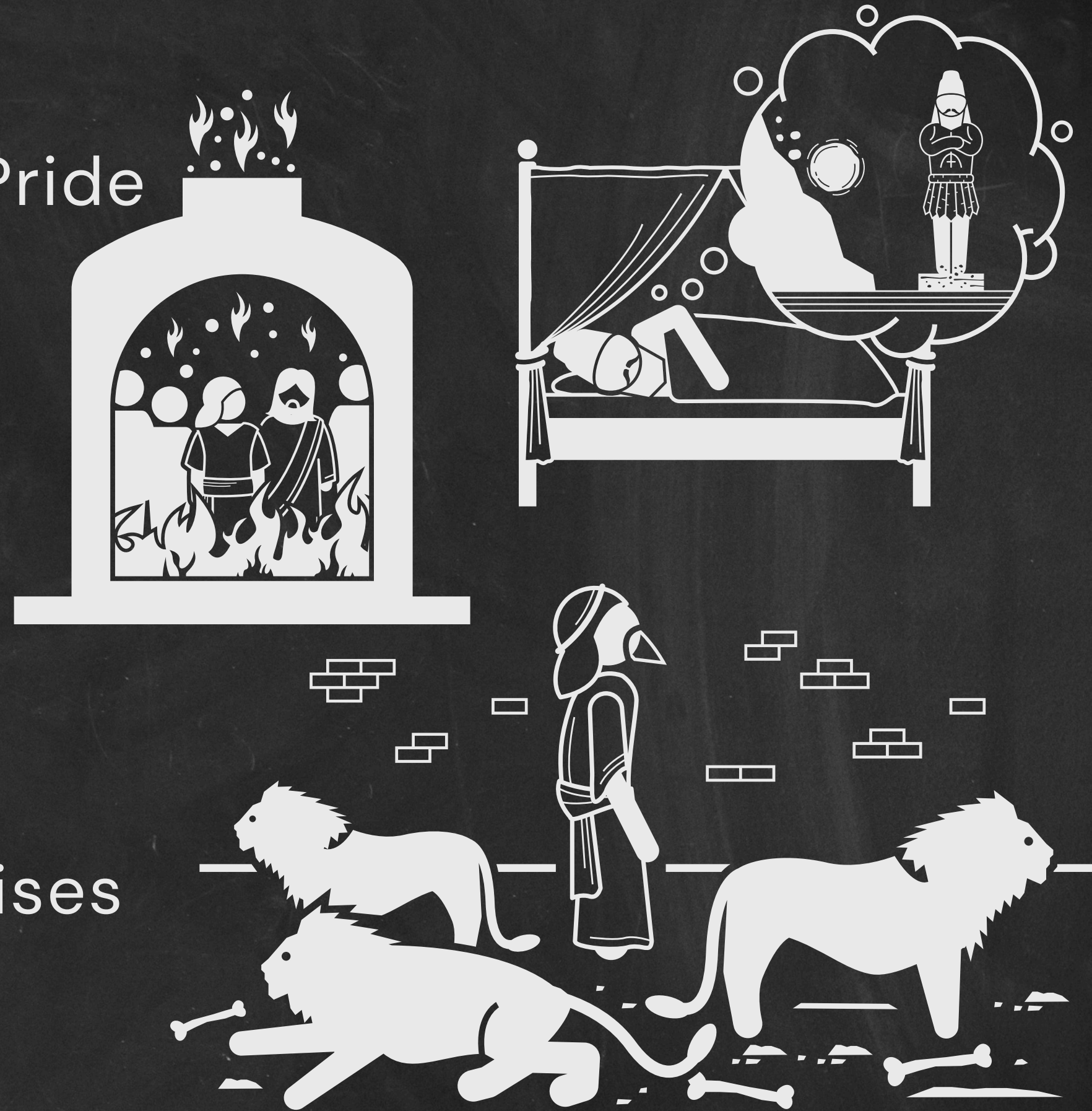


Lesson: Obedience brings blessing and sin brings death.

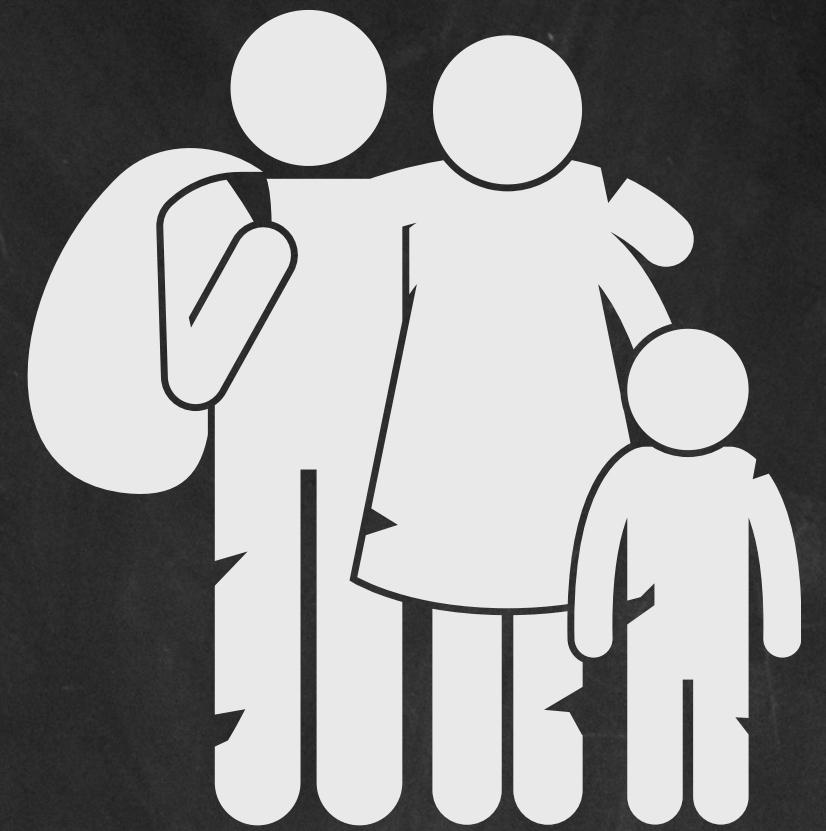
DANIEL (605—536 BC)

- 1 Daniel's Service
 - 2 The King's dream
 - 3 The Fiery Furnace
 - 4 Nebuchadnezzar's Pride
 - 5 Belshazzar's Pride
 - 6 The Lion's Den
 - 7 Daniel's Dream
- 8 Daniel's 2nd Vision
 - 9 Daniel's prayer
- 10–12 Daniel's 3rd Vision

Lesson: Live faithfully while God raises up and tears down leaders.



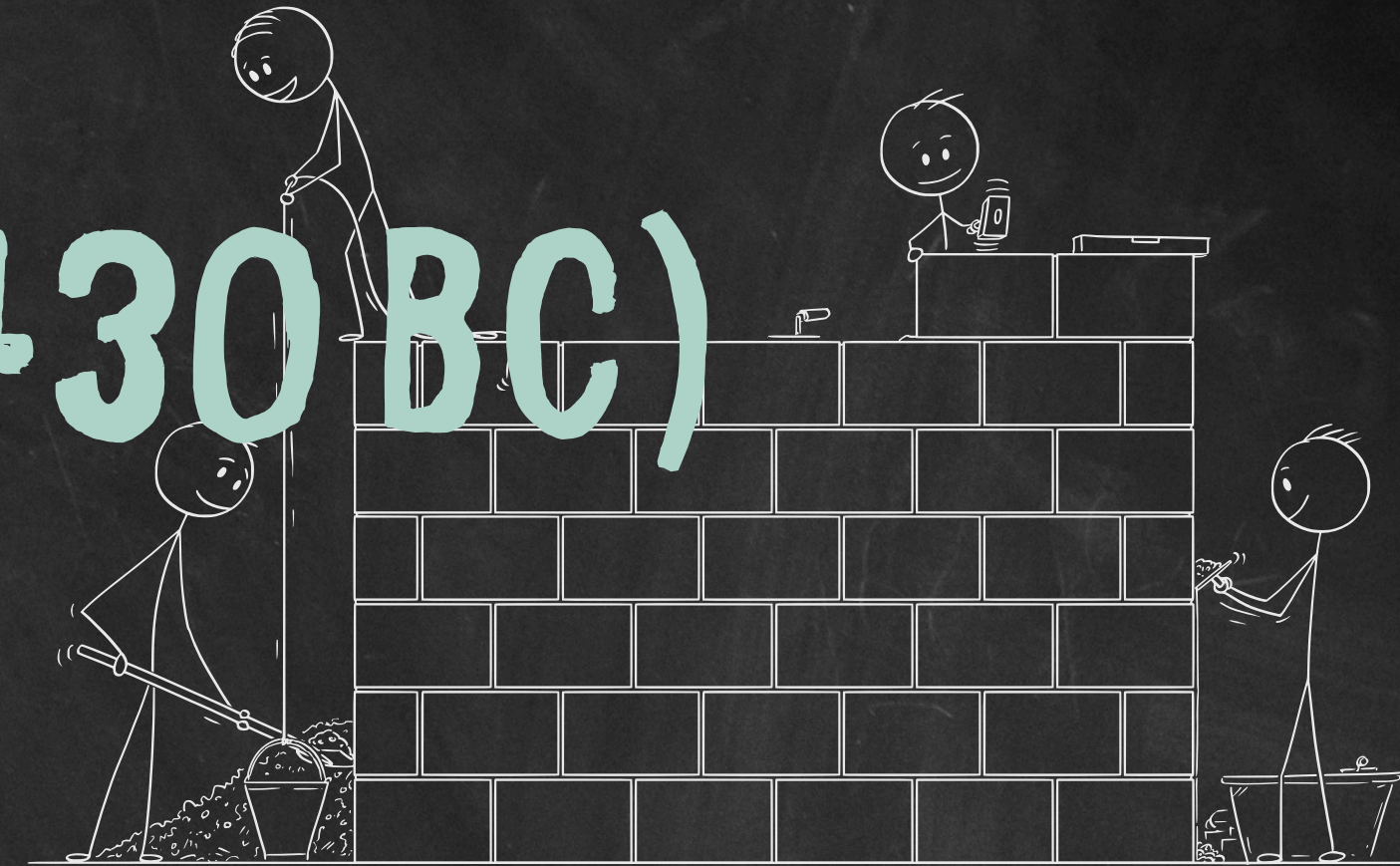
EZRA (539—458 BC)



- 1–6 Zerubbabel leads return and rebuilding
- 7–10 Ezra leads return and repentance

Lesson: God restores His people when they return to Him.

NEHEMIAH (445—430 BC)



- 1–7 Nehemiah leads return and rebuilding
- 8–13 Both lead celebration and repentance

Lesson: God strengthens His people when they remain in Him.

ESTHER (483—473 BC)

- 1–2 King of Persia's greatness
 - 3a Haman elevated
 - 3b Haman's decree to kill the Jews
 - 4 Esther & Mordecai plan to reverse the decree
 - 5 Esther's 1st Banquet
 - 6 The king honors Mordecai
 - 7 Esther's 2nd Banquet
 - 8a Esther & Mordecai plan to reverse the decree
 - 8b Mordecai's decree to save the Jews
 - 8c Mordecai elevated
 - 9–10 Mordecai's greatness



Lesson: God takes care of His people, whether we see Him or not.

JOSHUA—RUTH



- **Joshua:** There's victory in trusting and obeying the Lord.
- **Judges:** Disobedience and sin leads to death and suffering.
- **Ruth:** Stay faithful, because God is working behind the scenes.

Lesson: Turn to the Lord, when facing the unknown.

SAMUEL—KINGS



- **1 Samuel:** God opposes the proud, but gives grace to the humble.
- **2 Samuel:** God works out grace and justice for imperfect people.
- **1 Kings:** Learn from past sins, don't repeat them.
- **2 Kings:** Rejecting God leads to destruction.

Lesson: Follow God's plan, to see the best outcome.

CHRONICLES + DANIEL



- **1 Chronicles:** God redeems humanity through the line of David.
- **2 Chronicles:** Obedience brings blessing and sin brings death.
- **Daniel:** Live faithfully while God raises up and tears down leaders.

Lesson: Trust in God's plan, for He is in control.

EZRA-ESTHER



- **Ezra:** God restores His people when they return to Him.
- **Nehemiah:** God strengthens His people when they remain in Him.
- **Esther:** God takes care of His people, whether we see Him or not.

Lesson: Turn to the Lord, for He saves and restores.

HISTORY



- **Josh–Ruth:** Turn to the Lord, when facing the unknown.
- **Sam–King:** Follow God's plan, to see the best outcome.
- **Chron+Dan:** Trust in God's plan, for He is in control.
- **Ez–Esth:** Turn to the Lord, for He saves and restores.

Lesson: God works all things for the good of those who love Him.